



ISMIRM

Turkish

CHAPTER



ismrmturkish@gmail.com

About ISMRM Turkish Chapter

Founded: in 2019 by Prof. Muhtesem Agildere

Total # of Members: 150

Total # of ISMRM Members: 59 (25 Full Members, 34 Trainee Members)

Current Officers:

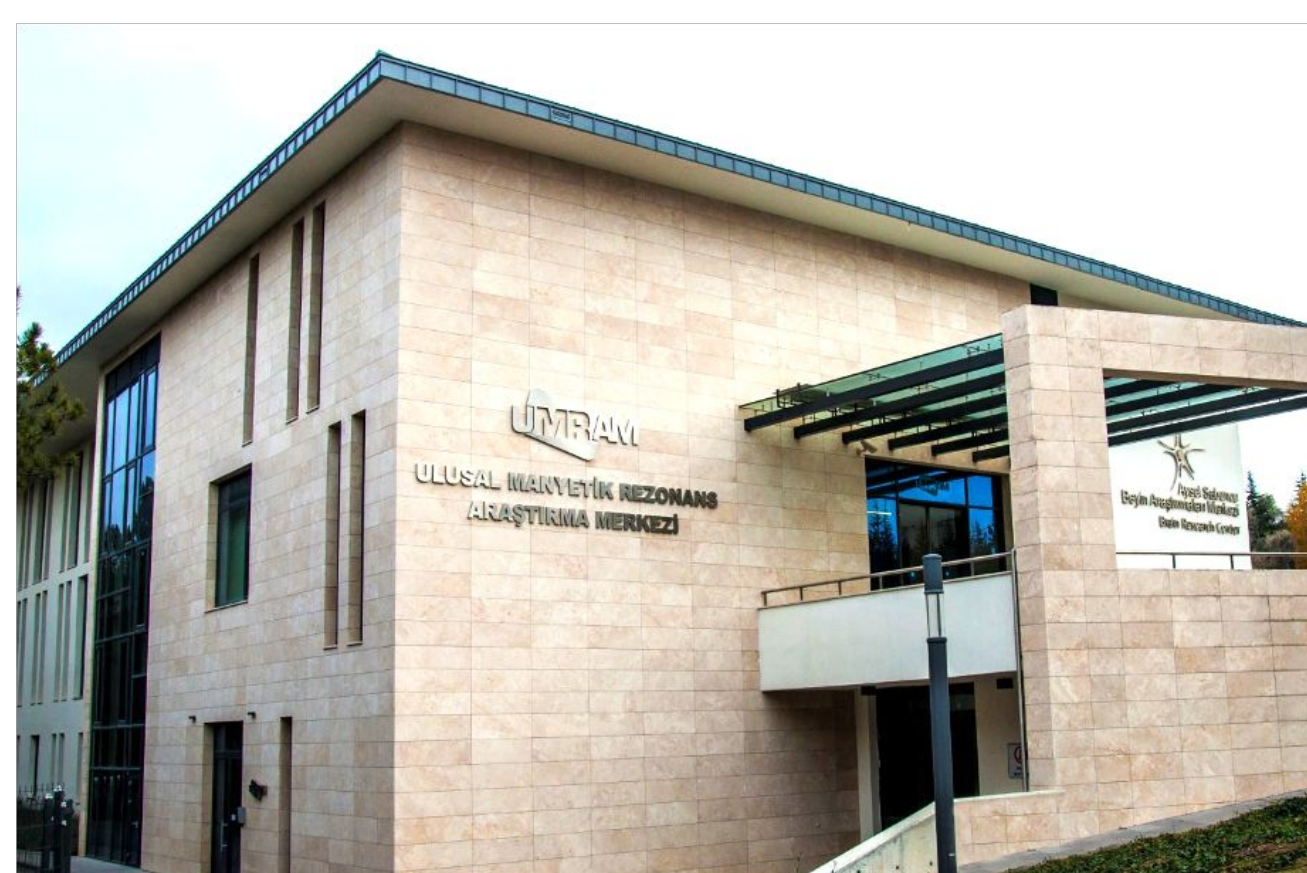
- **President:** Emine U. Saritas, Bilkent University, Dept. of Electrical & Electronics Eng., Ankara, Türkiye
- **Secretary:** Pinar S. Ozbay, Bogaziçi University, Institute of Biomedical Eng., Istanbul, Türkiye
- **Treasurer:** Ozkan Doganay, Ege University, Institute of Health Sciences, Izmir, Türkiye
- **Committee Member:** Emre Kopanoglu, Cardiff University, CUBRIC / School of Psychology, Cardiff, Wales, UK
- **Committee Member:** Kader Karli Oguz, UC Davis Medical Center, California, CA, USA

Activities of ISMRM Turkish Chapter

- Face-to-face seminars, Online seminars, Workshops, Symposiums
- Scientific sessions at Turkish MR Society Congress
- Scientific sessions at Turkish Radiology Congress
- Social activities



National Magnetic Resonance Research Center (UMRAM), Bilkent University, Ankara, Türkiye



UMRAM has been established in 2009 at Bilkent University with the support of the Turkish Ministry of Development. It is currently supported by the European Union Horizon Europe Programme.

- **Director:** Prof. Tolga Çukur
- **# of Academic Members:** 15
- **# of Engineers / Staff:** 5
- **# of Postdoctoral Fellows:** 5
- **# of PhD/MSc Students:** 65



MRI Infrastructure:

Two fully research dedicated MRI scanners:

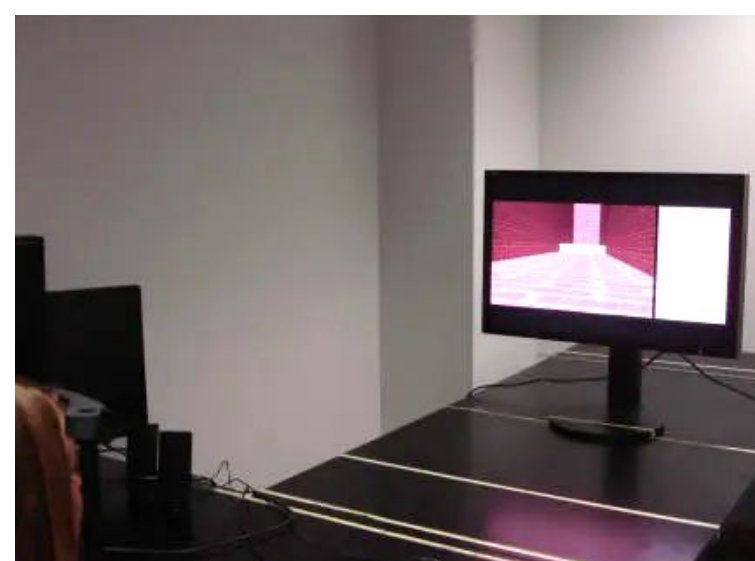
- Siemens 3T MAGNETOM Trio MRI Scanner
- Scimedix SM160 1.5T MRI Scanner



MPI (Magnetic Particle Imaging) Lab:

Two in-house developed MPI scanners:

- Preclinical Field Free Line (FFL) MPI Scanner
- Prototype Field Free Point (FFP) MPI Scanner
- Magnetic Particle Spectrometer (MPS) Systems



Other Facilities:

- EEG lab, with 64-channel MR compatible EEG system
- Psychophysics lab
- Electronics lab, RF lab
- CPU/GPU clusters
- Animal facility



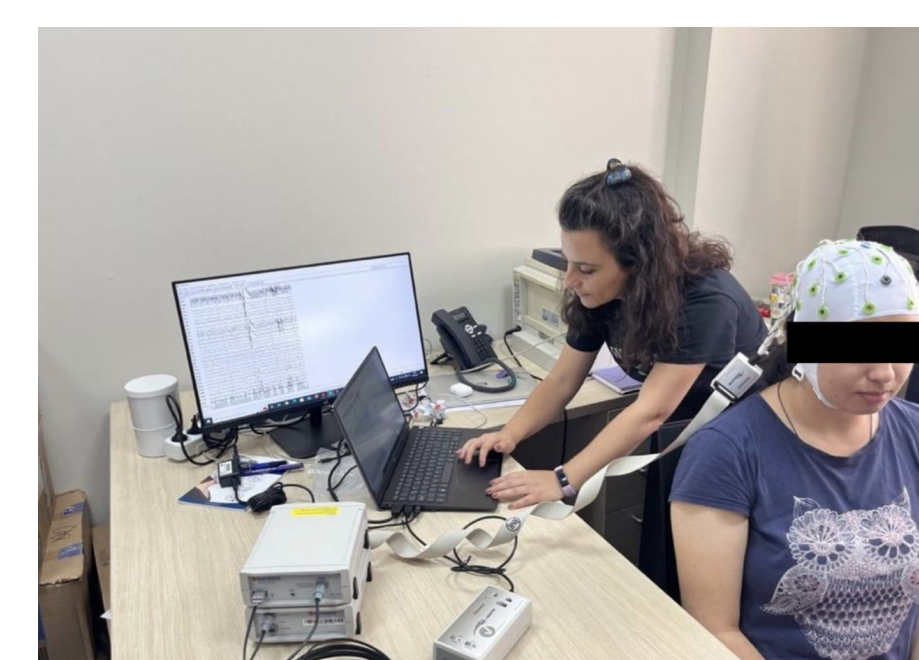
Center for Life Sciences and Technologies (LifeSci)

Institute of Biomedical Eng., Boğaziçi University, Istanbul, Türkiye



Boğaziçi LifeSci has been established in 2010 at Boğaziçi University. It is supported by the Ministry of Industry and Technology, with co-financing from the European Union, and also by Istanbul Development Agency.

- **Directors:** Prof. Rana Sanyal (LifeSci), Prof. Ahmet Ademoğlu (BME)
- **# of Academic Members:** 50, from 13 departments
- **# of Engineers / Staff:** 40
- **# of PhD/MSc Students:** 380



Animal Imaging Unit:

Two fully research dedicated preclinical imaging scanners:

- Preclinical MR Solutions 7T MRI Scanner
- Preclinical MR Solutions PET-CT Scanner

Other Facilities:

- Medical Device Development Unit (Cleanroom)
- Animal Care and Production Unit (Vivarium)
- Test-Analyses Unit

Other Laboratories:

- Computational Imaging Lab
- Multimodal Imaging and Physiology Lab
- MR Compatible 32 Channel EEG
- MR Compatible Eye Tracking System

Collaborations: Acıbadem University Altunizade Hospital (Siemens 3T MRI Scanner), Istanbul University, Bilkent University